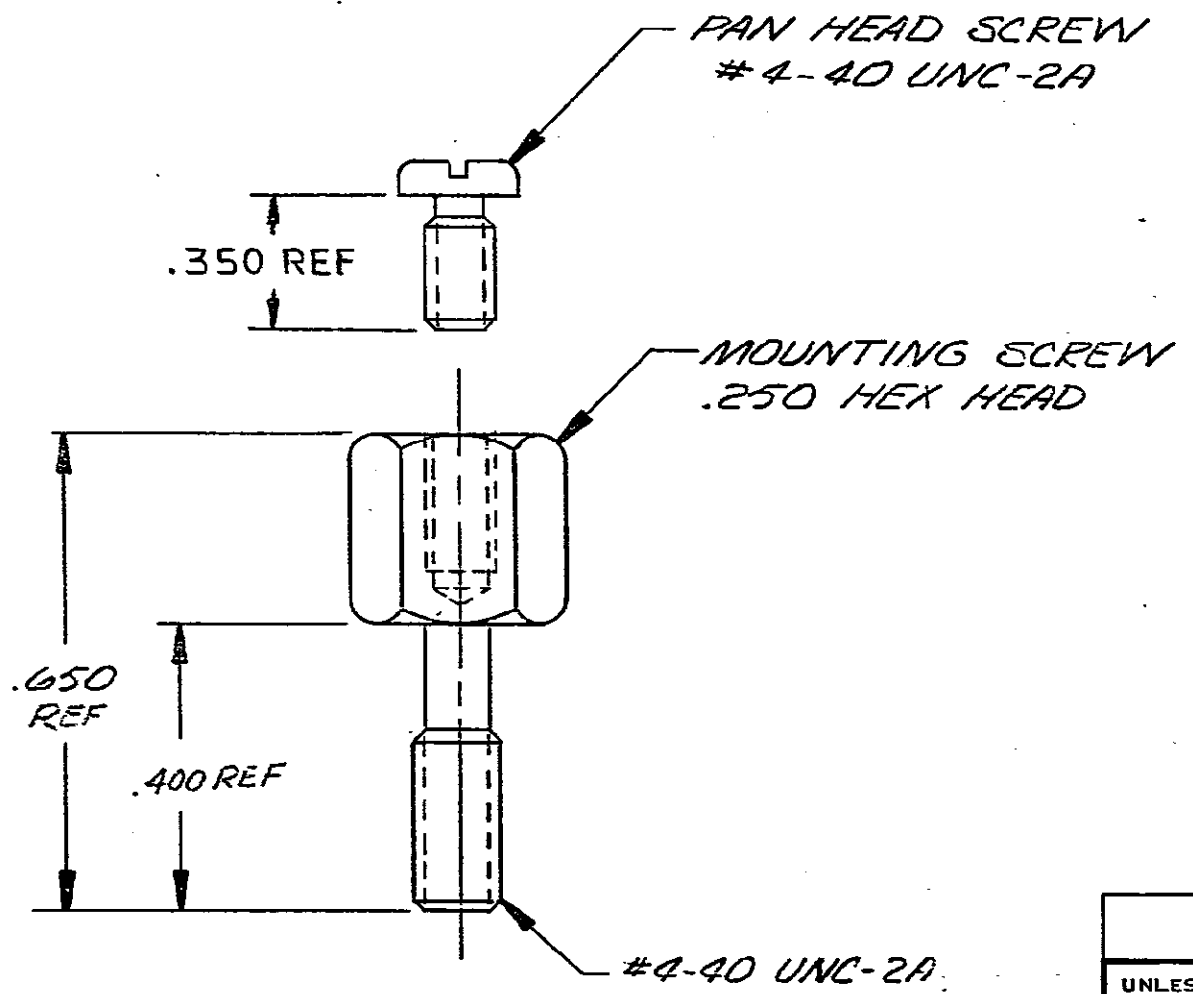


© COPYRIGHT 1977 BY AMP INCORPORATED, HARRISBURG, PA. ALL INTERNATIONAL RIGHTS RESERVED. AMP INCORPORATED PRODUCTS COVERED BY U. S. AND FOREIGN PATENTS AND/OR PATENTS PENDING.

REVISIONS						
P	F	ZONE	LTR	DESCRIPTION	DATE	APPROVED
C			C	REV PER AA-3022	8-29-86	VS

UNPUBLISHED COPY NOT TO BE REPRODUCED NOR PUBLISHED WITHOUT WRITTEN PERMISSION OF AMP INCORPORATED.

⚠ MATERIAL: PAN HEAD SCREW - ZINC PLATED STEEL
MOUNTING SCREW - ZINC PLATE WITH YELLOW CHROMATE OVER STEEL.



UNLESS OTHERWISE SPECIFIED DIMENSIONS ARE IN INCHES. TOLERANCES ON: DECIMALS ± .005 ANGLES ± .5°		CONTRACT NO		PART NO	
MATERIAL		DR <i>James B. Peltz</i> 2-7-77		AMP INCORPORATED Harrisburg, Pa.	
FINISH		CHK <i>J. Conroy</i> 2-8-77		NAME KIT, HDW, BACK PNL MTG SCR LOCK CHAMP	
		APPO <i>C.F. Moore</i> 2/23/83		SIZE B	
		APPD		CODE IDENT NO 00779	
		DSGN APPD		NUMBER 552631	
		OTHER APPD		SCALE NTS	
				SHEET 1 OF 1	